



PLEX Elite 9000

Uncovering the undiscovered



Science proved it wasn't flat.

What will you discover?

// INNOVATION
MADE BY ZEISS

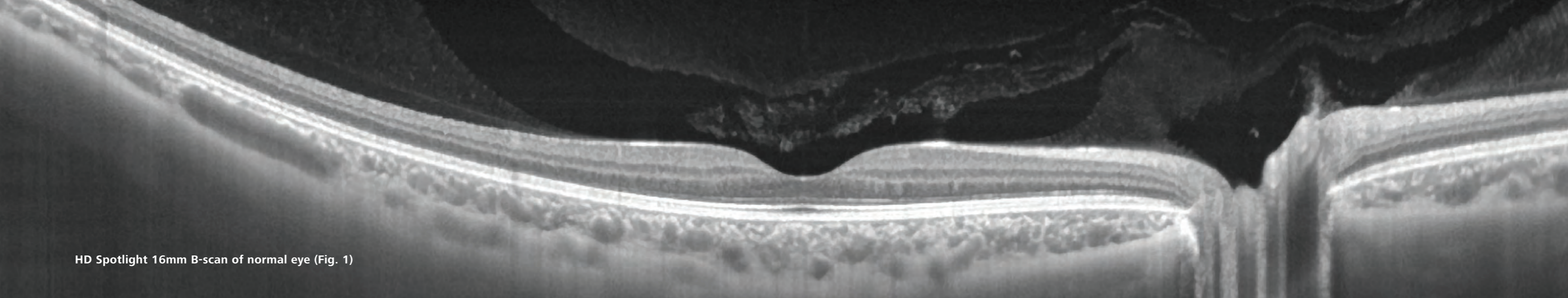
Uncovering the undiscovered

A new idea is often the start of scientific discovery. But it is transformational new technology that often enables researchers to act upon these ideas and to explore previously unreachable frontiers. ZEISS PLEX® ELITE 9000 is just such a technology. By inviting researchers into a new world of structural and microvascular clarity of the anatomy, PLEX ELITE 9000 is foundational to the future of retina research and to the understanding and development of retina disease.

PLEX Elite 9000

- **SEE** deeper, wider, and in more detail
- **STUDY** early mechanisms of micro- and neovascularization of the posterior segment from vitreous to sclera
- **EXPLORE** the progression of retinal and choroidal pathology, such as CNV
- **IMPROVE** understanding of choroid physiopathology
- **EVALUATE** the mechanism of retina and choroid response to a therapy



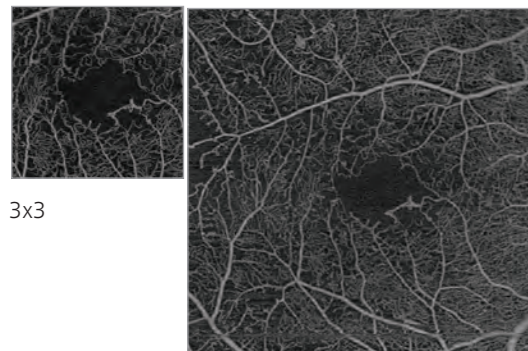


HD Spotlight 16mm B-scan of normal eye (Fig. 1)

Explore deeper meanings

ZEISS PLEX Elite 9000 swept-source OCT allows clinical researchers the potential to see deeper, wider, and in more detail from the vitreous to the sclera in the posterior segment.

AngioPlex maps of the full retina of a proliferative diabetic retinopathy

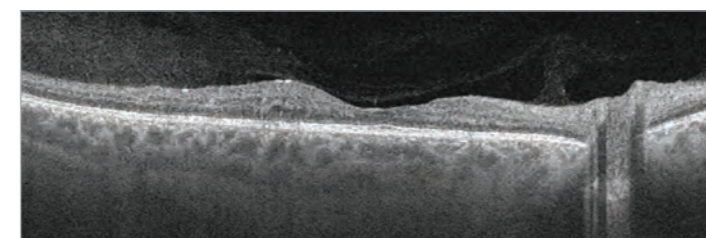


3x3

6x6



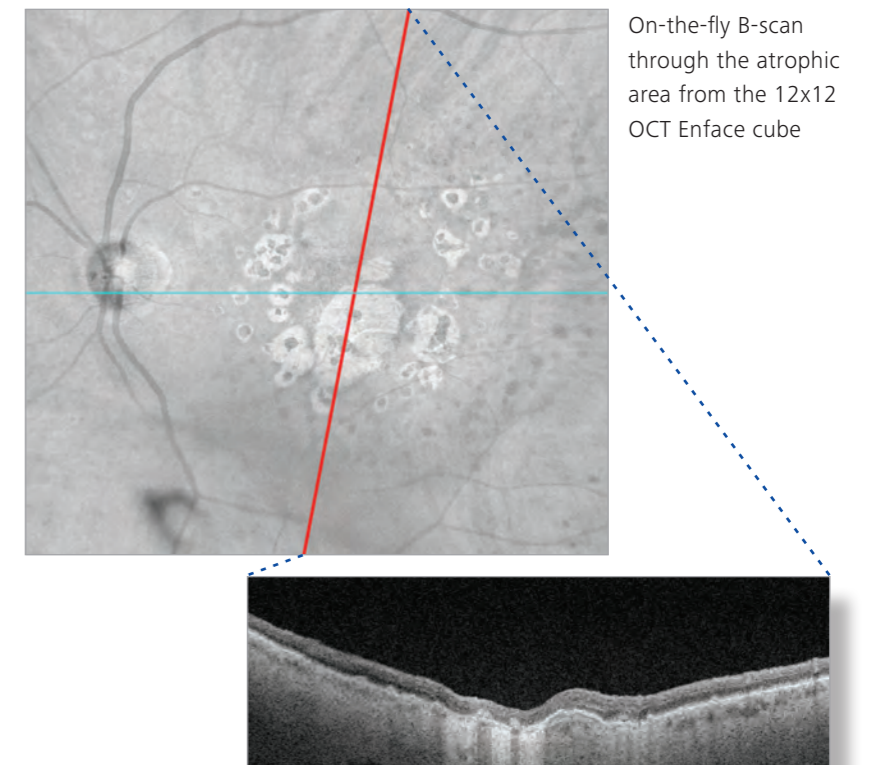
9x9



Ultra-wide 12x12 AngioPlex map and corresponding B-Scan



Retina depth-encoded ZEISS AngioPlex map of a large CNV with a corresponding B-scan



On-the-fly B-scan through the atrophic area from the 12x12 OCT Enface cube

AngioPlex™ OCT angiography for ultra-clear 3D microvascular visualizations powered by OMAG[®]

UHD (ultra-high definition) cubes with excellent image quality of fundus, clear visualization of vasculature, and ocular structures at any depth from vitreous to sclera

FastTrac™ real-time tracking of eye movement for motion-artifact compensation

Up-to-date SW and HW technology over two years to keep you at the cutting edge of development in the area of swept-source OCT

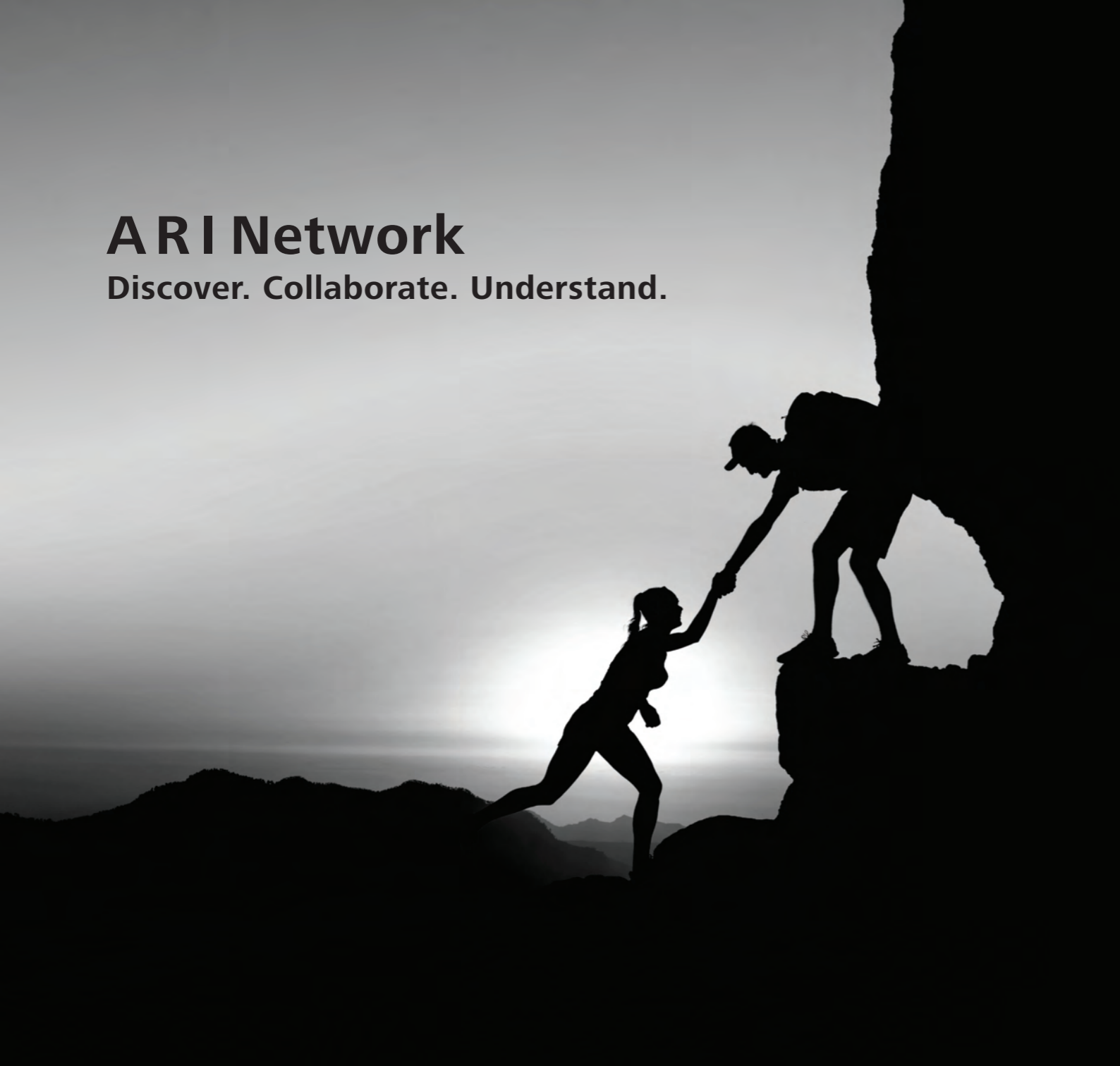
Ultra-wide 12x12 single-shot cubes for flow detection by AngioPlex and for structure visualization

HD spotlight high-detail B-scan up to 16mm (see Fig. 1)

On-the-fly B-scan to define a custom slice through any angle

ARI Network

Discover. Collaborate. Understand.



The Advanced Retina Imaging (A R I) Network, with PLEX Elite 9000 at its core, brings together the **expertise of leading clinicians and researchers** around the world with scientists and developers **at ZEISS** to accelerate the development of innovations to benefit patients today and in the future.

Through an active exchange of ideas and findings, the aim of the Advanced Retina Imaging Network is to drive the development of new clinical application and future OCT technologies.

Technical Specifications

OCT Imaging

Methodology	Swept-source OCT
Optical source	Swept-source tunable laser: center wavelength between 1040 nm and 1060 nm
Scan speed	100,000 A-scans/sec
A-scan depth	3.0 mm (in tissue)
Axial resolution (optical)	6.3 μm (in tissue)
Axial resolution (digital)	1.95 μm (in tissue)
Transverse resolution*	20 μm (*transverse [Lateral] resolution is calculated from the beam size at the pupil)
Field of view	56°
Minimum pupil diameter	2.5 mm

Fundus imaging

Methodology	Line-scanning ophthalmoscope (LSO) – live fundus image during alignment and during OCT scan
Optical source	Super-luminescent diode (SLD) 750 nm
Field of view	36° W x 30° H
Frame rate	> 20 Hz

Iris imaging

Methodology	CCD camera
Resolution	1280x1024

CE 0297



Carl Zeiss Meditec, Inc.

5160 Hacienda Drive
Dublin, CA 94568
USA
Toll-Free: +1 800 341 6968
Phone: +1 925 557 4100
Fax: +1 925 557 4101
www.zeiss.com/med



Carl Zeiss Meditec AG

Goeschwitzer Str. 51-52
07745 Jena
Germany
Phone: +49 36 41 22 03 33
Fax: +49 36 41 22 01 12
www.zeiss.com/med

EN_31_020_00011 The contents of the brochure may differ from the current status of approval of the product in your country. Please contact your regional representative for more information. Subject to change in design and scope of delivery and as a result of ongoing technical development. PLEX Elite 9000 is a registered trademark or trademarks of Carl Zeiss Meditec AG or of other companies of the ZEISS Group in Germany and/or in other countries.
© 2016 by Carl Zeiss Meditec, Inc. All copyrights reserved.